

AMANA SMART THERMOSTAT GUIDE



welcome

Choose the language you would like to use to set up your Amana thermostat.

english

español

français


use large font

continue

☰ main room



70

 **system error**



Your system may not be operational.

Do not attempt to correct the problem yourself. Contact your dealer as soon as possible.

contact your dealer





smart thermostat setup

1 communication →

2 personalization →

3 equipment setup →

4 system optimization →

5 preferences →

complete setup →

< wifi

use wifi



networks



disconnected

< communication

equipment type >
unitary

wifi >
CoxWiFi

previous step

next step

< wifi

use wifi



networks



CoxWiFi

internet



connected

Amana Cloud



not connected

legal notices



< personalization

language
english >

use large font

date & time
11/19/2022, 11:20 AM >

name
main room >

degree units
fahrenheit >

previous step

next step

< equipment setup

heat pump
ASZS602410 >

gas furnace
AMVC800603BNAD >

EEV coil >

media filter >

add equipment ⊕

previous step

next step

< add equipment

aux heat source >

humidifier >

dehumidifier >

UV bulbs >

electronic filter >

HEPA filter >

zone board >

aux heat source

heat pump is primary heat...

aux is primary heat source

control >

cancel

add equipment

< control

disabled

use T on / T off

indoor unit fan enabled

fan speed
high >

fan on delay
30 sec >

fan off delay
10 sec >



< heat pump

Amana ASZS602410
Communicating 17 SEER
Variable Speed 2023 HP

specifications >

cool settings >

heat settings >

heat pump settings >

< balance point

The Heat Pump won't run below this outdoor temperature.

15

20 °F

25

Above the balance point the furnace can be locked out to reduce gas usage:

prioritize efficiency

heat pump only above balance point

prioritize comfort

heat pump primary, furnace as needed

< system optimization

system test



charge mode



optional tests



error history



calibration



status



previous step

next step

< system test

run test



This is approximately a 5-15 minute test. If the thermostat is set to cool mode, the system will enter charge mode upon completion, otherwise it will stop.

< system test

test running



This is approximately a 5-15 minute test. If the thermostat is set to cool mode, the system will enter charge mode upon completion, otherwise it will stop.

< optional tests

cooling



fan



heat pump heat



gas heat





smart thermostat setup

✓ **1** communication →

✓ **2** personalization →

✓ **3** equipment setup →

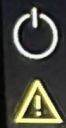
✓ **4** system optimization →

✓ **5** preferences →

complete setup →

☰ main room ▲

70



smart thermostat setup

- ✓ 1 communication →
- ✓ 2 personalization →
- ✓ 3 equipment setup →

**Before completing
commissioning...**

return font size to normal

continue

× main room

learn more



settings



70



< settings

system mode >

schedule >

away >

display >

sound >

reminders >

date & time >

... >



< settings

account

air quality

humidity

energy

thermostat

Warning

This feature accesses advanced features of your system. Any changes to the configuration can prevent proper operation.

cancel

continue

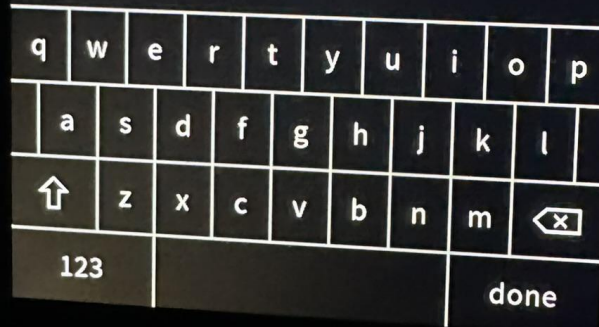
< dealer edit



Enter the installer code to return to the setup wizard.



unlock thermostat



dealer edit



Use the following installer code to
access advanced settings for this
thermostat:

4287

< dealer edit



Enter the installer code to return to the setup wizard.

4 2 8 7

unlock thermostat



1	2	3	4	5	6	7	8	9	0
-	/	:	;	()	\$	&	@	"
#+=	.	,	?	!	'	⌫			
abc								done	



setup

Your Amana smart thermostat saves each step as you proceed. You can always go back and change your settings.

begin setup



 **system error**



System Test required for start up



setup

Your Amana smart thermostat saves each step as you proceed. You can always go back and change your settings.

begin setup >

setup options >

learn more >

smart thermostat setup

✓ **1** communication →

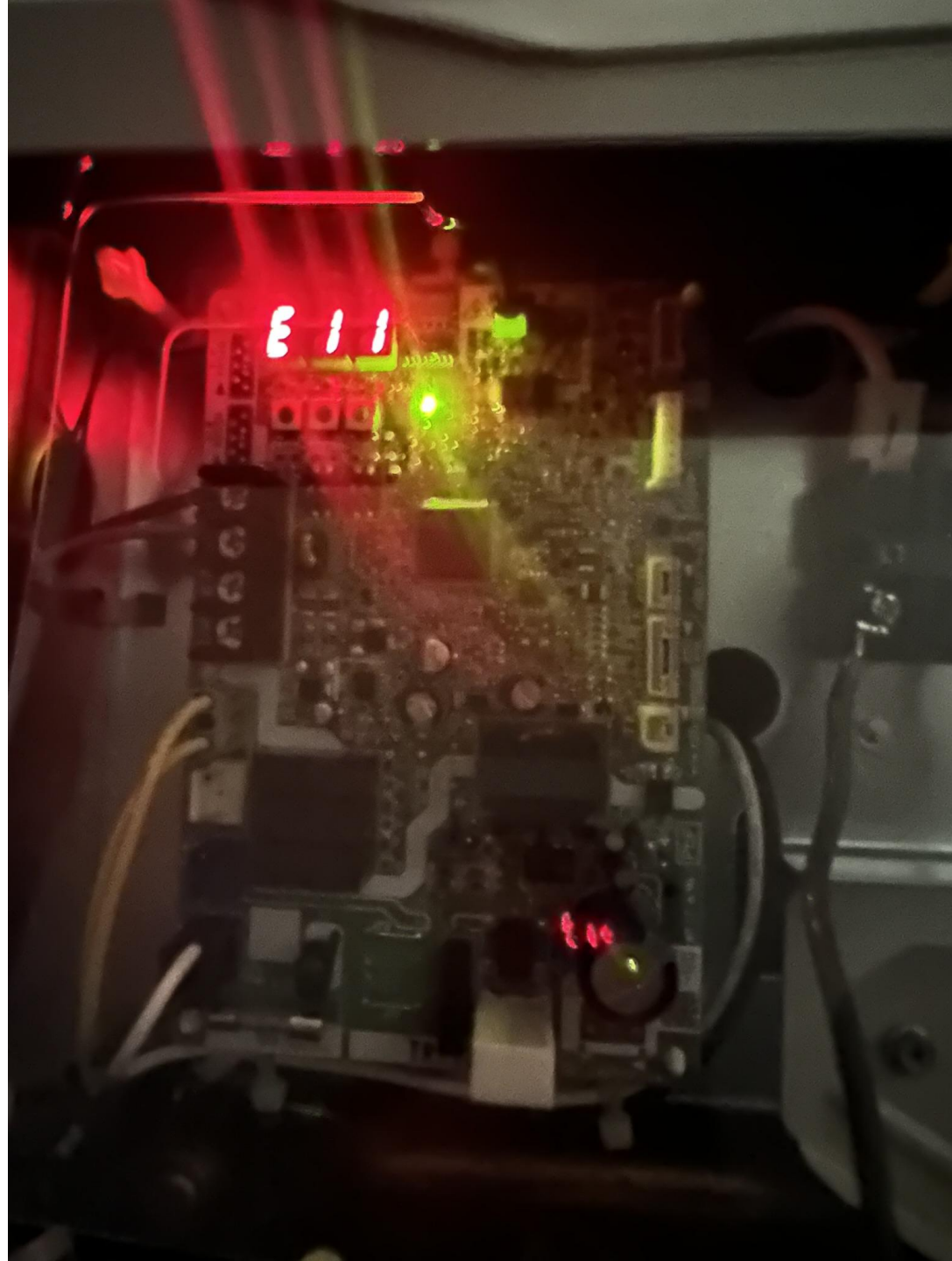
✓ **2** personalization →

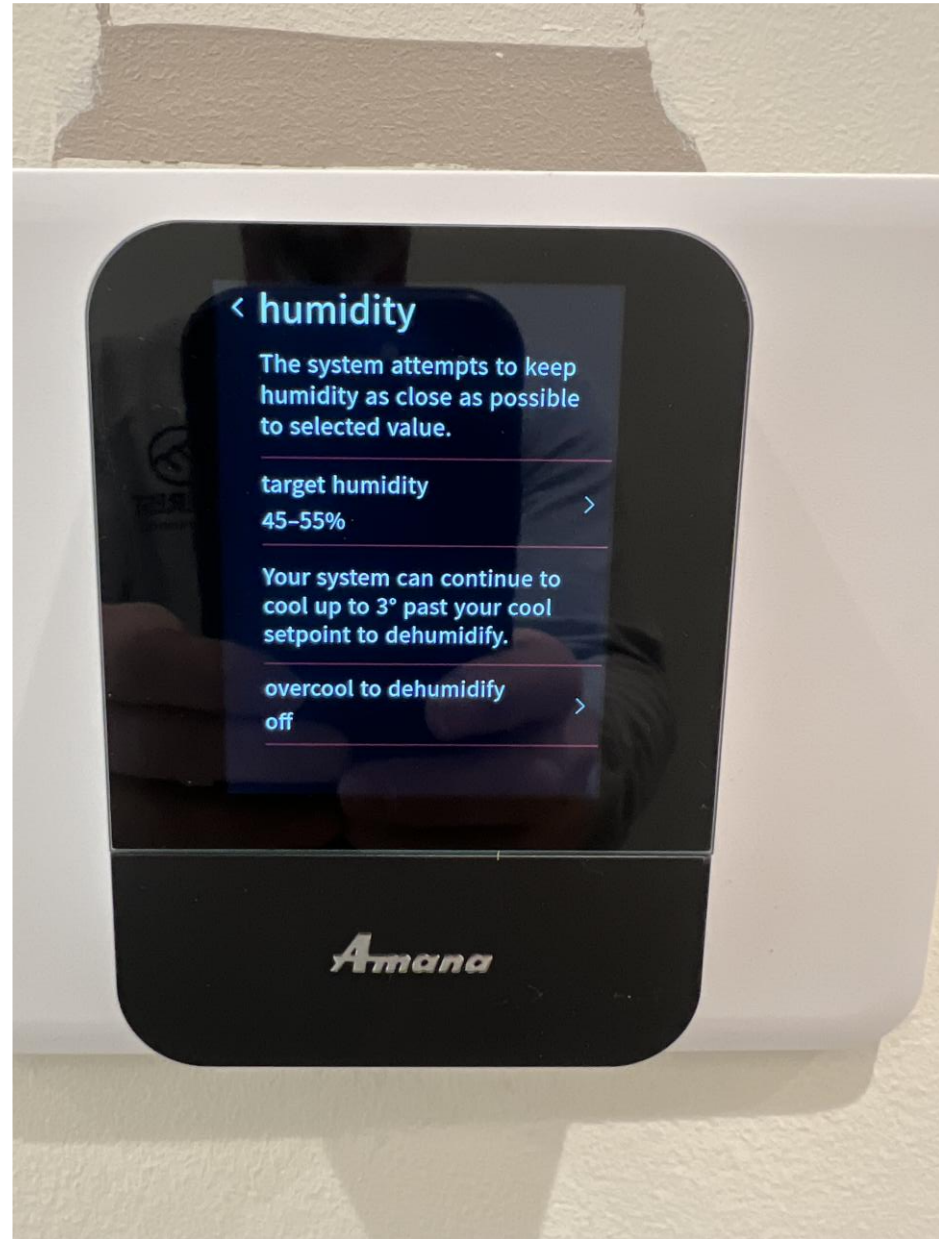
✓ **3** equipment setup →

✓ **4** system optimization →

✓ **5** preferences →

complete setup →





< humidity

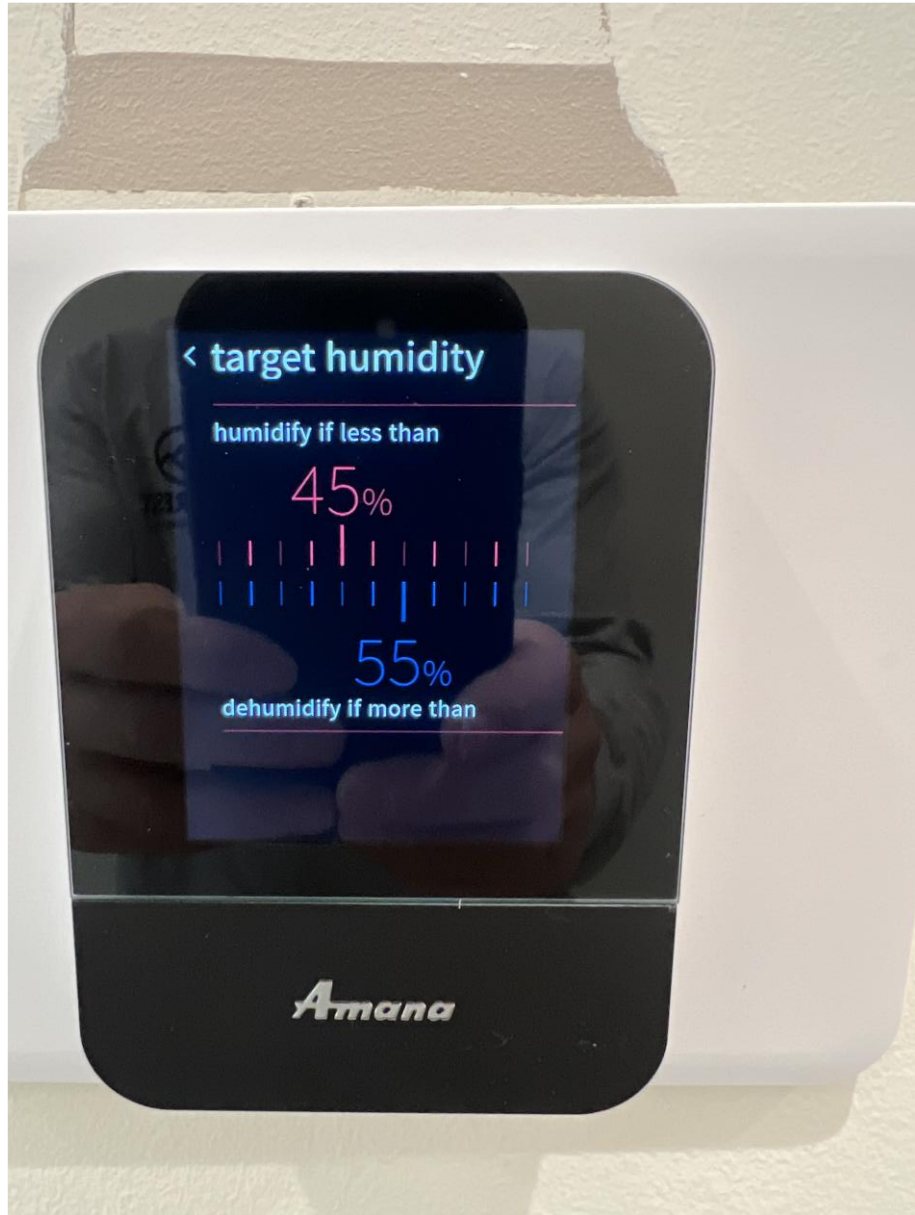
The system attempts to keep humidity as close as possible to selected value.

target humidity >
45-55%

Your system can continue to cool up to 3° past your cool setpoint to dehumidify.

overcool to dehumidify >
off

Amana



< target humidity

humidify if less than

45%

55%

dehumidify if more than

Amana

